

West London CAMHS presents:

MENTAL HEALTH AND WELLBEING FAIR

21 September 2024 | 11am - 3pm

Brentford FC Community Stadium Hub

Children and Adolescent Mental Health Services (CAMHS) are delighted to **invite all young people and their families** in West London to the **Mental Health and Wellbeing Fair**.

If you're interested in **learning more about the mental health support** available for children and young people in West London, **we warmly encourage you to visit our fair**.

Our **CAMHS teams** will be hosting stalls that include:

- **Mental health organisations** and charities
- Various **child-friendly activities and workshops**
- Our **CAMHS Youth Ambassadors** will be leading a panel discussion with **prominent mental health advocates**.
- The first 50 families can collect a **free tote bag filled with stickers, stress balls, and more!**

Scan the QR code or [click here](#) to **book your FREE place**. We look forward to seeing you there!



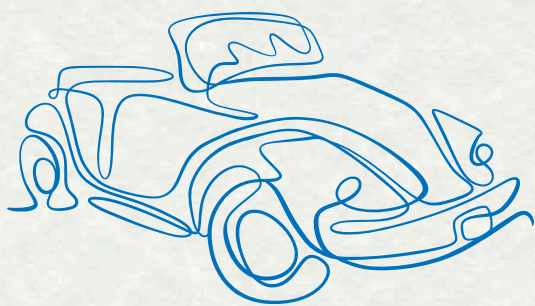
 @instacamhswl

GETTING HERE

Brentford FC Community Stadium Hub

Brentford FC Community Sports Trust
1A Thomas Layton Way
Underwood House
Brentford
TW8 0SB.

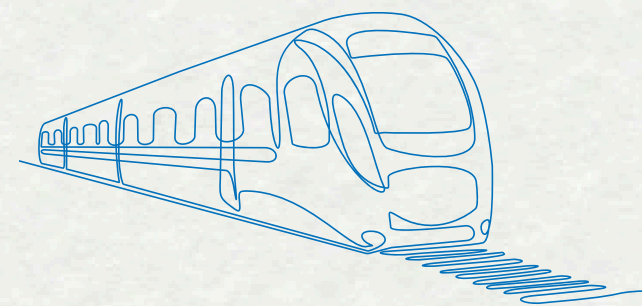
What Three Words: ///audit.purely.youth



By car

Please note: Parking at the Community Stadium Hub is extremely limited and only have accessible parking spots at the request of the stadium. For any accessible parking contact:
eventspace@brentfordfcst.com

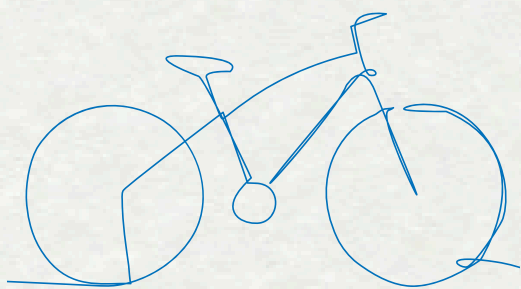
For offsite parking please contact:
service.userinvolvement@westlondon.nhs.uk.



By Train

Kew Bridge Station is 320m from the venue. South West Trains run services from Waterloo, via Vauxhall and Clapham Junction. There is no level access at Kew Bridge.

Richmond Station has lift and level access. Take 65 bus (in the direction of Ealing Broadway) to Kew Bridge. Walking time from Kew Bridge Station is 5 minutes to the venue.



By Bike

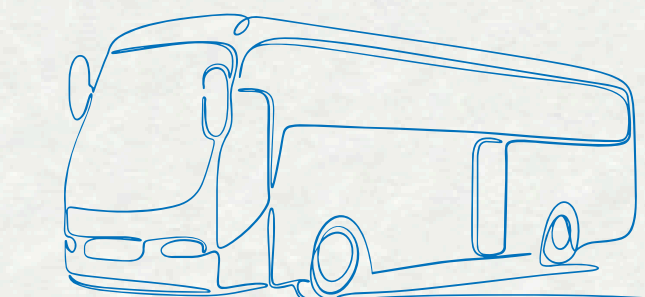
We love to welcome cyclists to our Venue. There are bicycle racks on Thomas Layton way. Bikes left outside our gates are left at your own risk.

We do not allow bicycles, tricycles, roller skates, skateboards, and scooters into the Venue.

By Tube

Gunnelsbury Station is 965m from the venue. It is served by the District Line and London Overground. There is no level access from the southbound or northbound platforms. It is possible to continue to Richmond and catch a tube back one to use the eastbound platform which does have level access.

Ealing Broadway Station connects to bus route 65, stopping at Kew Bridge Station.



By Bus

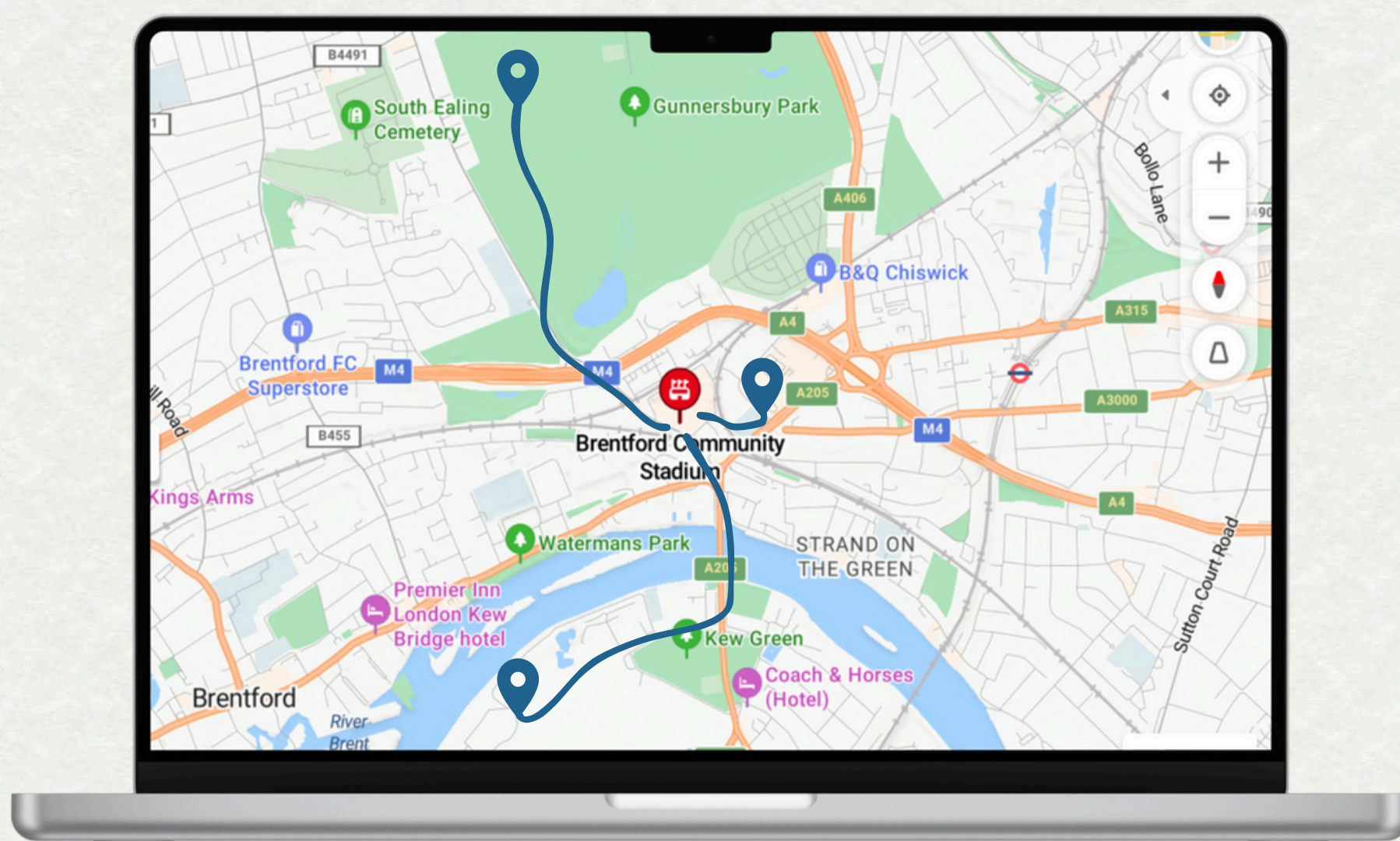
Route 65 (Ealing Broadway/Kingston) stops at Kew Bridge station.

Route 110 (Hammersmith/Hounslow) stops at Kew Bridge station.

OFF SITE PARKING

Brentford FC Community Stadium Hub

Brentford FC Community Sports Trust
1A Thomas Layton Way, Underwood House
Brentford, TW8 0SB



Kew Gardens Car Park (TW9 3AF)

Limited parking available in the car park
Parking costs £9 per day. You can pay on site, or
with the Paybyphone app.

No charge for motorcycles and mopeds
Blue badge holders park for free in disabled access
:parking spaces or other spaces if full
Car park closes at 18:30.

22-minute walk to the Community Stadium Hub.

Gunnersbury Park Sports Hub (W3 8LQ)

Limited parking available in the car park.
Parking costs £9 for 9 hours. You can pay on site, or
with the Ringo App. Car park open 24 hours.
24-minute walk to the Community Stadium Hub.

Brentford Fountain Leisure Centre (TW8 0HJ)

Limited parking available in the car park.
Parking costs £1 for 2 hours. Maximum stay of 2
hours.

4-minute walk to the Community Stadium Hub.

