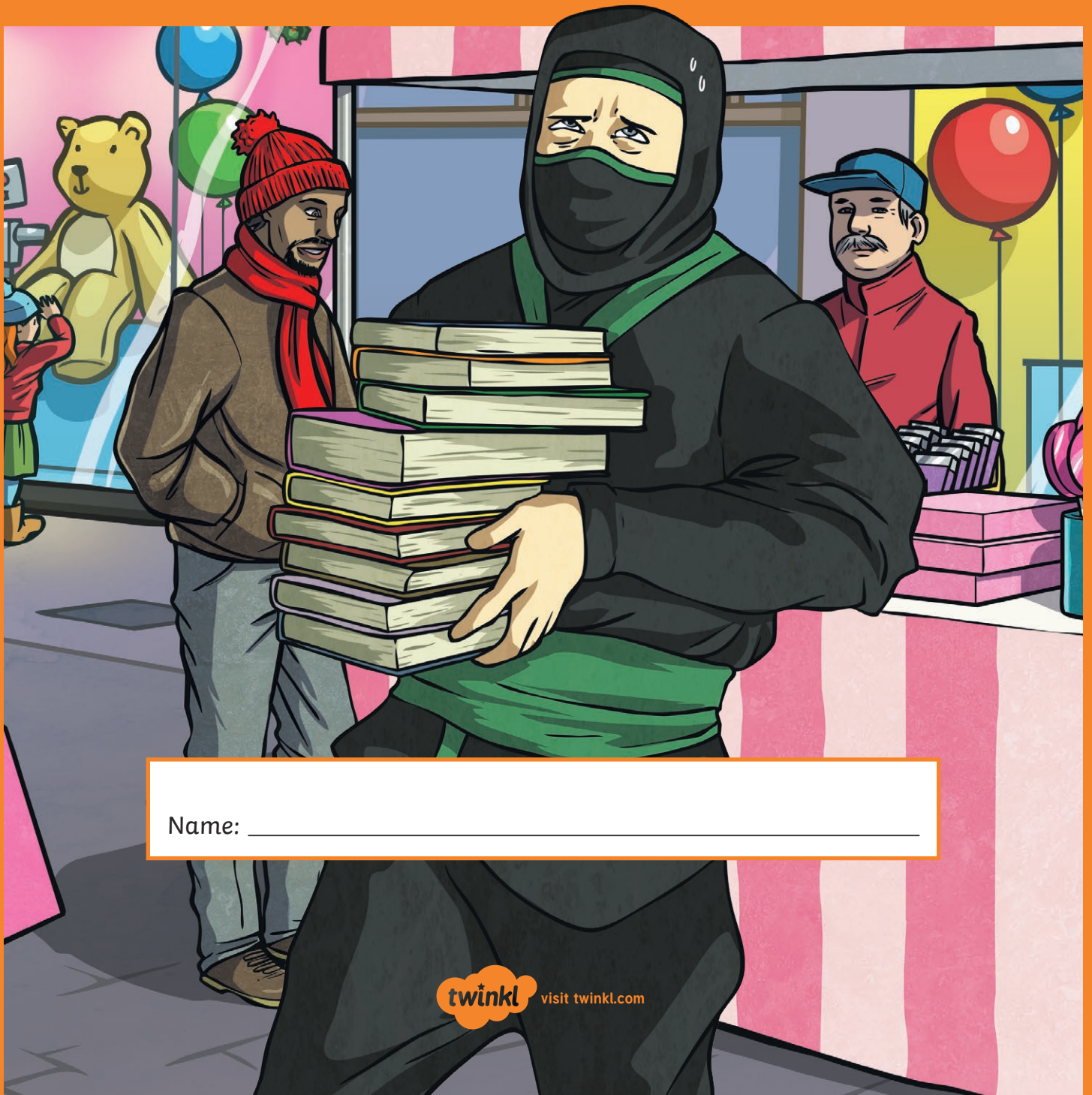


# Year 6 SATs

Grammar, Punctuation & Spelling Revision  
& Practice Booklet 2:

Sentences, Phrases and Clauses



Name: \_\_\_\_\_

# Contents

G2	Functions of Sentences.....	page 3-4
G3.1	Sentences and Clause.....	page 5-6
G3.2	Noun Phrases.....	page 7-8
G3.3	Co-ordinating Conjunctions.....	page 9-10
G3.4	Subordinating Conjunctions and Subordinate Clauses....	page 11-12
	Ten-Minute Test.....	page 13-15



# G2: Functions of Sentences

## What is a statement?

Statements are sentences which tell you something. They end with a **full stop**. For example:

**It will snow later today.**

## What is a question?

Questions are sentences that ask you something. They end with a **question mark**. For example:

**Where are you going?**

## What is a command?

Commands are sentences that tell you to do something. They usually end with a **full stop**. For example:

**Mix the batter thoroughly.**

## What is an exclamation?

An exclamation is a sentence beginning with '**What**' or '**How**'. It is a full sentence which ends with an **exclamation mark**. For example:

**What wonderful children they are!**

1 What is the **function** of the following sentences?

How amazing your painting is

\_\_\_\_\_

We are visting Gran tomorrow

\_\_\_\_\_

What is your favourite sweet

\_\_\_\_\_

Put your books away now

\_\_\_\_\_

2 Turn this statement into a **question** using exactly the same words. Use the correct punctuation.

Erica has been to France before.

\_\_\_\_\_

\_\_\_\_\_

- 3 Tick **one** box in each row to show whether the sentence is a **statement**, a **question** or a **command**.

Sentence	Statement	Question	Command
How often do you train with your gym group			
I have been attending gymnastics classes for three years			
Listen to the instructor to ensure you are safe			
Keisha is amazing on the beam			

- 4 Write an **exclamation** sentence beginning with the word: **What**.

---



---

- 5 Which sentence is a **command**? Tick **one**.

- Which fruit do you like the best
- What a tasty pudding we ate today
- I usually eat apples at break time
- Put your fruit peelings in the compost bin

- 6 Which sentences must end in a **question mark**? Tick **all** that apply.

- Later, we are going swimming
- Don't forget to bring your towel, will you
- What fun we had on the slides
- Would you like to go swimming again next week





# G3.1: Sentences and Clauses

## What is a main clause?

A main clause (or it could be called a simple sentence) is a group of words that expresses one complete thought. Every main clause must contain a **subject** and a **verb**. They can also be called independent clauses. For example:

**He ran.**

## What is a subordinate clause?

Subordinate clauses do not make sense on their own (they are dependent) but when they are used with a main clause, they create a complex (multi-clause) sentence, such as:

**He ran *after school every day.***

## What is a relative clause?

Relative clauses are a different type of dependent (or subordinate) clause that give more detail about the subject of the main clause. They begin with a relative pronoun:

**who**

**which**

**whose**

**whom**

**that**

**where**

- 1 Label each of the clauses in the sentence below as either **main (M)** or **subordinate (S)**.

When we woke up, we rushed into the garden and we made a big snowman.

Diagram showing the sentence structure with boxes for labeling clauses:

```
graph TD
    A[When we woke up, we rushed into the garden and we made a big snowman.]
    B[ ] --- A
    C[ ] --- A
    D[ ] --- A
```

- 2 What is the grammatical term for the underlined part of the sentence?

Despite being late, we didn't miss any of the show.

- a main clause
- a subordinate clause
- a relative clause
- a noun phrase



3 Underline the **relative clause** in each sentence.

My grandmother who is ninety still enjoys gardening.

My friends and I prefer the cinema that has large seats.

My cousin whose coat I borrowed last week is 13 years old.

.....

4 Which sentence contains a **relative clause**? Tick **one**.

- We are going to visit my nan tomorrow.
  - The dog that I found belongs to my neighbour.
  - Alfie would like to travel around the world.
  - If the weather improves, we'll go cycling.
- .....

5 Tick **one** box in each row to show whether the underlined clause is a **main clause** or a **subordinate clause**.

Sentence	Main clause	Subordinate clause
Your friend, <u>whom you met on holiday last year</u> , is visiting this weekend.		
<u>We always try our best</u> even when things are tough.		
I'm feeling hungry <u>because I've done lots of exercise this afternoon</u> .		

.....

6 Underline the **relative clause** in the sentence below.

The swimming pool that has fast water slides is closed for refurbishments.

## G3.2: Noun Phrases

### What is a noun phrase?

A noun phrase is a noun and the words that modify it, such as **determiners**, which act as a noun together in a sentence. For example:

**the bear**

### What is an expanded noun phrase?

An expanded noun phrase gives much more detail than a simple noun phrase, such as an **adjective** to describe the noun:

**the angry bear**

and a **prepositional phrase** to give extra details:

**the angry bear with a sore paw**

**Expanded noun phrases** allow us to give precise information quickly and concisely:

**Watch out for the angry bear with a sore paw.**

- 1 What is the grammatical term for the underlined words in the sentence below?

The bakery on the corner sells lots of cream cakes.

- 2 Underline the longest possible **noun phrase** in the sentence below.

I saw a derelict house with broken, boarded-up windows.

- 3 Write a **noun phrase** containing at least three words to complete the sentence below. Remember to punctuate your answer correctly.

\_\_\_\_\_ was crossing the stormy ocean in search of treasure.

- 4 Underline the longest possible **noun phrase** in the sentence below.

The book about Greek history is my favourite.

- 5 Which sentence includes an **expanded noun phrase**? Tick **one**.

- My dad ran a marathon last year.
- We went to London to watch him run.
- We saw many vast bridges crossing the river.
- Dad finished the race in under four hours.

- 6 Write a **noun phrase** containing at least three words to complete the sentence below.

Remember to punctuate your answer correctly.

\_\_\_\_\_ was hunting its prey.

- 7 Underline the longest possible **noun phrase** in the sentence below.

There were two tall, spindly trees in the middle of the clearing.

- 8 Which sentence includes an **expanded noun phrase**? Tick **one**.

- We went on a walk in the woods yesterday.
- There were many different plants and animals to see.
- We stopped to eat a delicious picnic on a wooden table.
- The sun shone and we all felt relaxed.





# G3.3: Co-ordinating Conjunctions

## What is a conjunction?

A conjunction links two or more words, phrases or clauses together.

## What is a co-ordinating conjunction?

**Co-ordinating conjunctions** link two main clauses (or independent clauses) together as an equal pair to create a compound sentence. We usually remember these words using the acronym '**FANBOYS**':

**for and nor but or yet so**

main clause + **co-ordinating conjunction** + main clause = compound sentence

Gita drank her water. She was thirsty.  
Gita drank her water **for** she was thirsty.

- 1 Complete the sentence below by writing the **conjunctions** from the box in the correct places. Use each conjunction only **once**.

and                      so                      nor

Piotr did not finish the test \_\_\_\_\_ did he check his answers \_\_\_\_\_  
he couldn't be surprised that his teacher was angry \_\_\_\_\_ he had to stay in  
at break time.

- 2 Complete the sentence below with a **co-ordinating conjunction** and a **main clause**.  
Remember to punctuate your answer correctly.

There was a mysterious sound \_\_\_\_\_  
\_\_\_\_\_  
.....

- 3 Rewrite the two sentences below as one sentence using an appropriate **co-ordinating conjunction**.

Remember to punctuate your answer correctly.

We usually go swimming on Mondays. Today the pool was closed.

---



---

.....

- 4 Complete the sentence below with a **co-ordinating conjunction** and a **main clause**. Remember to punctuate your answer correctly.

Dad was wearing thick gloves \_\_\_\_\_

---

.....

- 5 Complete the sentence below by writing the **conjunctions** from the box in the correct places. Use each conjunction only **once**.

so                      but                      and

It was time for maths \_\_\_\_\_ my pencil broke \_\_\_\_\_ I asked Wanda if I could borrow hers \_\_\_\_\_ she said "No."

.....

- 6 Rewrite the two sentences below as one sentence using an appropriate **co-ordinating conjunction**.

Remember to punctuate your answer correctly.

Samira practised her spellings. She got full marks on the test.

---



---

# G3.4: Subordinating Conjunctions and Subordinate Clauses

## What is a subordinating conjunction?

**Subordinating conjunctions** introduce a subordinate clause; you can remember some of the most useful ones with the acronym '**I SAW A WABUB**':

if	since	as	when	although
while	after	before	until	because

The words **when**, **after**, **until**, **before** and **since** can be used as prepositions or as subordinating conjunctions in sentences.

If **introducing a clause** (a group of words including a verb), they are being used as a **subordinating conjunction**.

## What is a subordinate clause?

A **subordinate clause** supports a main (independent) clause. The opening words of subordinate clauses show that they are dependent on the independent clause. For example:

**The ferry left the port after the storm cleared.**  
**After the storm cleared, the ferry left the port.**

- 1 Rewrite the sentence below, adding a **subordinate clause**.

Remember to punctuate your answer correctly.

We will be here for another hour.

---

---

.....

- 2 Underline the **subordinate clause** in the sentence below.

Although he likes football, Fred doesn't play for a team yet.



- 3 Tick one box in each row to show whether the word until is used as a **subordinating conjunction** or as a **preposition**.

Sentence	<u>until</u> used as a subordinating conjunction	<u>until</u> used as a preposition
You can't have pudding <u>until</u> you have eaten your main meal.		
The swimming pool is open <u>until</u> 8 o'clock.		
<u>Until</u> we save enough money, we can't go on holiday.		

- 4 Underline the **subordinate clause** in each sentence below.

When you have finished your homework, you can go out to play.  
 I haven't seen my cousin since we visited him last Christmas.  
 After you have completed your work, please tidy your things away.

- 5 Which underlined group of words is a **subordinate clause**? Tick **one**.

- If you need help, put up your hand.
- Read quietly while I do the register.
- Our class is the smallest but the loudest.
- Mr Fry is the best teacher in the school.



- 6 Rewrite the sentence below, adding a **subordinate clause**.

Remember to punctuate your answer correctly.

Amira went straight home after school.

---



---

# Ten-Minute Test

Use a stopwatch or a timer to give yourself 10 minutes to complete the following questions. Use the answer sheet to check your work and take some time to revisit any areas you need to improve on.



1. What is the **function** of the following sentences?

Where shall we go on holiday \_\_\_\_\_

I'd like to visit Italy \_\_\_\_\_

How lucky to be able to travel the world \_\_\_\_\_

Fasten your seatbelts immediately \_\_\_\_\_

1 mark



2. Rewrite the two sentences below as one sentence using an appropriate **co-ordinating conjunction**.

Remember to punctuate your answer correctly.

We could go to the cinema. We could go bowling.

\_\_\_\_\_

\_\_\_\_\_

1 mark



3. Tick one box in each row to show whether the underlined clause is a **main clause** or a **subordinate clause**.

Sentence	Main clause	Subordinate clause
The eager pupils rushed into class <u>when the bell rang</u> .		
<u>As the bus was late</u> , we might miss the start of the film.		
<u>I couldn't go to school</u> because I was ill.		

1 mark




total for this page



4. What is the word before in this sentence? Tick **one** box.

Before you board the train, make sure you have all your bags with you.

- an adverb
- a preposition
- a co-ordinating conjunction
- a subordinating conjunction

1 mark



5. Underline the longest possible **noun phrase** in the sentence below.

We spotted an enormous, spooky castle in the distance.

1 mark



6. Which sentence contains a **relative clause**? Tick **one**.

- I'd like an ice cream and a lolly, please.
- This summer has been very hot so we have used our pool lots.
- Don't forget your sun cream as you don't want to burn.
- My cousin, who lives down the road, has been over to play most days.

1 mark



7. Underline the **subordinate clause** in each sentence below.

Since Justine got a new scooter, her stunt skills have improved.

Please don't talk while I'm teaching the lesson.

I'll be overjoyed if we get a new puppy.

1 mark

total for  
this page

8. Turn this question into a **statement** using exactly the same words. Use the correct punctuation.

Will Jakob be able to play football after school?

---

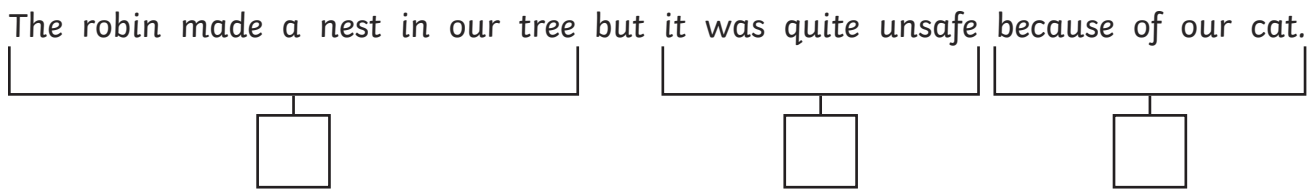


---

1 mark

😊
😐
😞

9. Label each of the clauses in the sentence below as either **main (M)** or **subordinate (S)**.



1 mark

😊
😐
😞

10. Which sentence includes an **expanded noun phrase**? Tick **one**.

- We had a bonfire yesterday.
- The smoke was smelly and hurt my eyes.
- We toasted marshmallows which were very tasty.
- We could see bright embers glowing into the evening.

1 mark

😊
😐
😞

total for this page