

# SJL News



Friday 8<sup>th</sup> September 2023

## Important dates

Please remember not to book holidays during term time.

### September

Monday 4 <sup>th</sup>	Staff training
Tuesday 5 <sup>th</sup>	Children return to school
Thursday 14 <sup>th</sup>	Year 6 secondary transfer meeting 3pm

### October

Tuesday 3 <sup>rd</sup>	Individual photos
Thursday 5 <sup>th</sup>	Full Governor Body Meeting

### November

Monday 13 <sup>th</sup>	Whole school flu nasal session
-------------------------	--------------------------------

## Welcome back!

It has been wonderful to see you returning to SJL this week. So many happy faces and cheery 'hellos' as we opened the gates on Tuesday. We would like to welcome our new families and wish you a happy and successful time at SJL.

We hope you had a fun filled summer holiday.

A few reminders to keep things running smoothly...

- ✓ **School gates open** at 8.50am and close at 8.55am. It is important your child arrives at school on time.
- ✓ At the end of the day school gates will open at 3.25pm.
- ✓ All children in years 1 to 6 will be collected from the playground.
- ✓ **Attendance.** Your child must be in school every day unless they are unwell or you have permission from school. More information about your responsibilities is on the reverse of this newsletter.
- ✓ **School uniform.** We are proud of our school uniform. Please make sure your child is in the correct school uniform every day.
- ✓ **PE lessons are weekly.** Please check the school uniform policy on the school website for the correct PE kit.

[www.sirjohnlillie.lbhf.sch.uk](http://www.sirjohnlillie.lbhf.sch.uk)

## Term dates 2023/24

Inset days to be confirmed

Please do not book holiday during term time.

## School lunches

Well done to all parents and carers who have signed up to the Pantry website in order to order their child's lunches.

The government are now paying for lunches for all children from Reception to year 6.

Your children have learned the new system very quickly and enjoy 'logging themselves in' on the lunch tablet to see what they will be having for lunch.

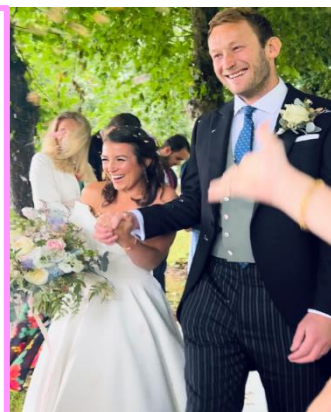
It is SO important that you remember to choose lunches your children will enjoy from the choices.



Meet

Mr and Mrs O'Connor

Congratulations to Miss Lane and her husband, Jon, who were married over the summer.



### Autumn term 2023 - 74 days

Starts	Monday 4 September 2023
Half term	Monday 23 October to Friday 27 October 2023
Ends	Thursday 21 December 2023

The Christmas break starts on Friday 22 December 2023 and ends on Friday 5 January 2024.

### Spring term 2024 - 54 days

Starts	Monday 8 January 2024
Half term	Monday 12 February to Friday 16 February 2024
Ends	Thursday 28 March 2024

The Easter break starts on Friday 29 March and ends on Friday 12 April 2024.

### Summer term 2024 - 67 days

Starts	Monday 15 April 2024
Half term	Monday 27 May to Friday 31 May 2024
Ends	Wednesday 24 July 2024

We've redesigned our website. Please surf our site and let us know what you think.

[www.sirjohnlillie.lbhf.sch.uk](http://www.sirjohnlillie.lbhf.sch.uk)

## Communication

You can communicate with us in many ways

- phone
- email
- making an appointment
- letter.

We will communicate by

- phone
- text
- email/letter
- appointment
- newsletter
- website.

It is VERY important you read the newsletter. If you lose the paper copy, then you can find it on our website [www.sirjohnlillie.lbhf.sch.uk](http://www.sirjohnlillie.lbhf.sch.uk)

Please look at it regularly.

## Parents/Carers Workshop



### Introduction to Brain Buddies Year 4 Parents/carers

Date: 13/09/2023  
Time 9am start

As part of your child's PSHE curriculum, Brain Buddies will be delivered to your child's class once a week, for 8 weeks. Brain Buddies is a whole class intervention teaching children about what mental health is, where feelings come from and practical tools/strategies that can help.

You are invited to attend a coffee morning/workshop at Sir John Lillie Primary School that will cover all you need to know about Brain Buddies.

There will be plenty of time to ask questions and discuss any queries you may have.

This session is led by Rebecca Gregory from the Mental Health Support Team (MHST) here at Sir John Lillie Primary School.

I hope to meet you there.

If you are interested in joining us,  
please express your interest in attending to your child's  
class teacher or feel free to just come along!



For blog posts, and to learn more about the support we offer, see our website: [www.lbhfandnhs.uk](http://www.lbhfandnhs.uk)  
Check out our video channel, providing you with resources and support on a variety of mental health and wellbeing topics: [www.lbhfandnhs.uk](http://www.lbhfandnhs.uk)

## School attendance and absence

This information is from the Gov.uk document

<https://www.gov.uk/school-attendance-absence>

You must make sure your child gets a full-time education that meets their needs (for example if they have special educational needs). You can send your child to school or [educate them yourself](#).

Children must get an education between the school term after their 5th birthday and the last Friday in June in the school year they turn 16.

You'll be contacted by either:

- the school - if your child is enrolled in school and does not turn up (even if they're only absent for a day)
- the council's education welfare officer - if they think your child is not getting a suitable education at home

You can be prosecuted if you do not give your child an education. You'll normally get warnings and offers of help from the local council first.

You can [get education and attendance information from your council](#)

## When your child can miss school

You can only allow your child to miss school if either:

- they're too ill to go in
- you've got advance permission from the school

There's [extra support available](#) if your child cannot go to school for long periods because of a health problem.

## Holidays in term time


You have to get permission from the head teacher if you want to take your child out of school during term time.

You can only do this if:

- you make an application to the head teacher in advance (as a parent the child normally lives with)
- there are exceptional circumstances

It's up to the head teacher how many days your child can be away from school if leave is granted.

You can be [fined](#) for taking your child on holiday during term time without the school's permission.

Class	Percentage of children in school every day these past three days.(T/W/Th)	How many children late these past three days.	Everyday counts. Every minute counts.
1L	95.8%	4	Support your child by bringing them to school every day and on time.   Congratulations to 4M and 5T for achieving 100% attendance this week.
2A	96.8%	8	
3P	94%	6	
4M	100%	2	
4H	97.8%	6	
5T	100%	2	
6H	96.8%	2	
6P	88.9%	2	
OVERALL	96.1%	32 ☹️	

**Brain nibbles.....** Each newsletter we are going to share interesting facts, places to visit and speciality weeks for you to join in with.

**How about a local walk this weekend?**

You could walk along the river from Hammersmith to Fulham Palace and wander around the gardens.

Perhaps take a picnic.  
Have fun!



The answer is 24.

**Puzzle time**

What is the question?



## FULHAM FC FOUNDATION FOOTBALL AFTER SCHOOL CLUBS

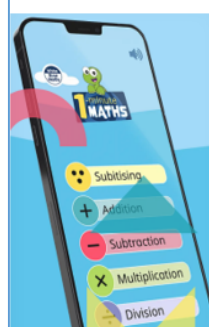
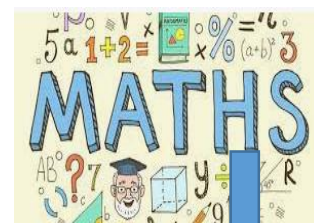
MONDAYS 3:30 - 4:30PM  
RECEPTION TO YEAR 2 & YEAR 3 TO YEAR 6  
NOW AVAILABLE TO BOOK

TO BOOK VISIT  
FULHAMSOCBERSCHOOLS.COM

### Contact us

Address	Sir John Lillie Primary Lillie Road Fulham SW6 7LN
Telephone	020 7385 2107
Email	<a href="mailto:admin@sirjohnlillie.lbhf.sch.uk">admin@sirjohnlillie.lbhf.sch.uk</a>
Website	<a href="http://www.sirjohnlillie.lbhf.sch.uk">www.sirjohnlillie.lbhf.sch.uk</a>

Please sign up to the White Rose Maths app to support your child's learning in maths.



### Free Maths App

The new 1-minute White Rose maths app helps children to build greater number confidence and fluency. It's all about targeted practice in engaging, one-minute chunks. Please download this app from the app store or google play.