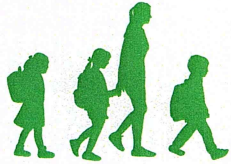


From November 2024

MAKING OUR CHILDREN'S LIVES SAFER, CLEANER AND GREENER



SCHOOL STREETS PLUS

Sir John Lillie Primary School



Dear parents and carers,

Removing barriers from Delaford Street

Back in September, we introduced a *School Street Plus* trial on Delaford Street with Sir John Lillie Primary School.

Your support and feedback has already helped make drop-offs and pick-ups safer and less polluted, with more parents and pupils walking and cycling to school. Today we want to let you know about the next stage of the trial.

From 4 November, we will replace the current barriers with automatic number plate recognition cameras which will not require any physical obstacles. This will make getting in and out of the school street **easier for exempt pupils and school staff**.

The smart technology cameras will continue to enforce the school run closures for non-exempt drivers during peak drop-off and pick-up times.

We continue to welcome your feedback before making any permanent decisions.

Easy access for exempt pupils and school staff

Children and adults with mobility issues as well as school staff and visitors are exempt from the restrictions.

Please email us at schoolstreets@lbhf.gov.uk, our team will give you information on how your vehicles can be made exempt.



Have YOUR say

We would like to hear from school parents about how best to make the area safer, cleaner and greener for families. Share your views on the *School Street Plus* trial by emailing schoolstreets@lbhf.gov.uk.

Learn more at lbhf.gov.uk/school-streets-plus-SJL or scan the QR code >>

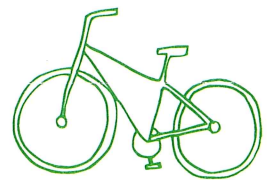


Kind regards from

The H&F Environment Team



Want to start cycling to school? Support is available!



GET UP TO £2,000

towards a new cargo bike
Visit lbhf.gov.uk/pedals-not-pollution or scan this QR code >>



HIRE A BIKE

through *Try Before You Bike*. Visit lbhf.gov.uk/try-before-you-bike or scan here >>



JOIN FREE FAMILY CYCLE TRAINING ON WEEKENDS

See lbhf.gov.uk/grouptraining or scan code.

DOWNLOAD THE CITY AIR APP

for clean air route-finding.



SCHOOL RUN CLOSURES

8am - 9.30am and
2.30pm - 4pm on school days

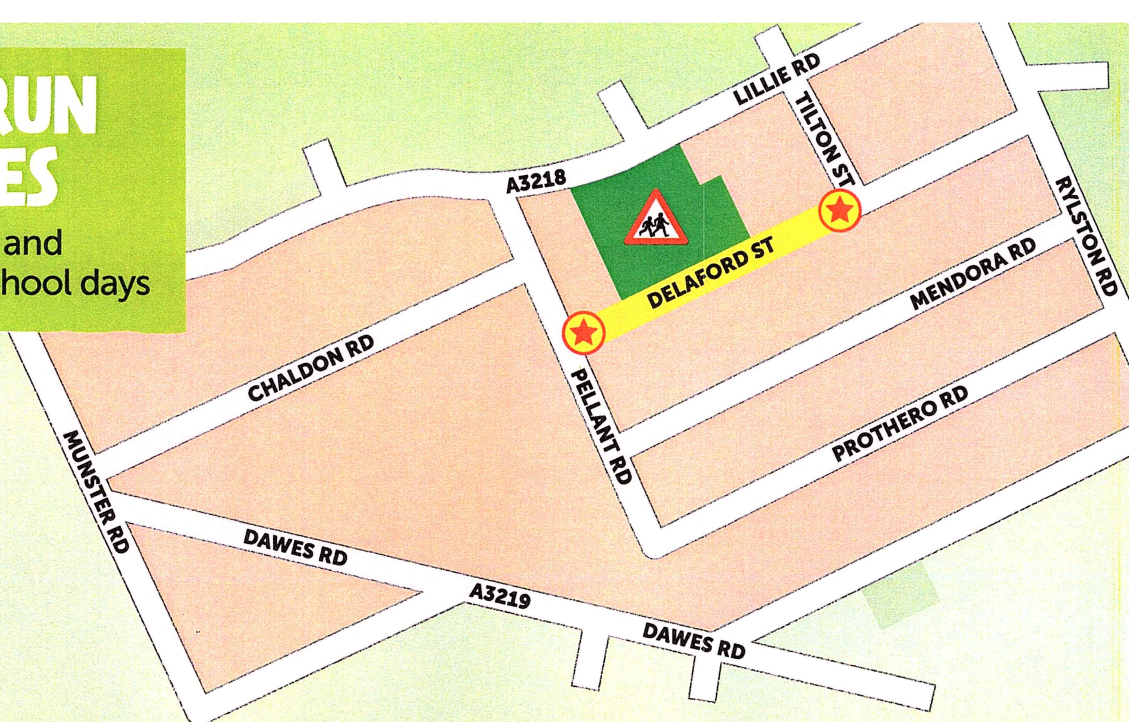
KEY



Sir John Lillie
Primary School



Automatic
number plate
recognition
cameras



How will it work?

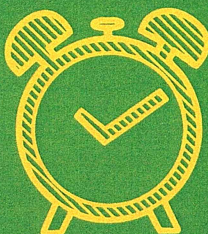
School run closures

The school run closures will continue as they have since September.

A stretch of Delaford Street will be closed to motorists from:

8am to 9.30am and 2.30pm to 4pm on school days only. The road will remain open the rest of the time.

It's to help protect pupils, cut air pollution in the area and make it easier to walk or cycle to school.



What's new?

Automatic number plate recognition cameras will replace the moveable barriers on Delaford Street at the junction of Pellant Road and Tilton Street.

As before, only exempt drivers will be able to move in and out of the school street zone freely. The cameras will pick up non-compliant drivers during the times of the school street restrictions.

There will be additional signage and a transition period, where we will be sending warning letters to drivers who are not compliant with the restrictions.



Exemptions include:

- RESIDENTS LIVING IN THE RESTRICTED AREA
- CARERS
- SCHOOL STAFF
- BLUE BADGE HOLDERS OR CHILDREN AND ADULTS WITH MOBILITY ISSUES
- EMERGENCY SERVICES
- BIN LORRIES
- POSTAL SERVICES AND TRADERS WHO REQUIRE ACCESS TO PROPERTIES IN THE NEW SCHOOL STREET



We'll continue to work closely with the school, local residents and local businesses to ensure these changes benefit the entire community.

For any further details and questions, email schoolstreets@lbhf.gov.uk